

## FEATURES

- 10K cycles mechanical life
- Endless rotation upon request
- RoHS compliant materials ready
- Carbon resistive element
- Plastic substrate
- Over-moulding manufacturing technique
- SMD mounting
- RoHS reflow soldering capable
- Wiper positioned at 50%
- Both sides cross slot easy adjustment
- Accidental rotor movement protected
- Traceability insured through date code marking

## MECHANICAL SPECIFICATIONS

- Mechanical rotation angle: 280° ± 10°
- Electrical rotation angle: 245° ± 25°
- Torque: 0.2 to 3 Ncm. (0.28 to 4.2 in-oz)
- Stop torque: > 7.5 Ncm. ( 10.5 in-oz)
- Mechanical life\*: 10K cycles

## ELECTRICAL SPECIFICATIONS

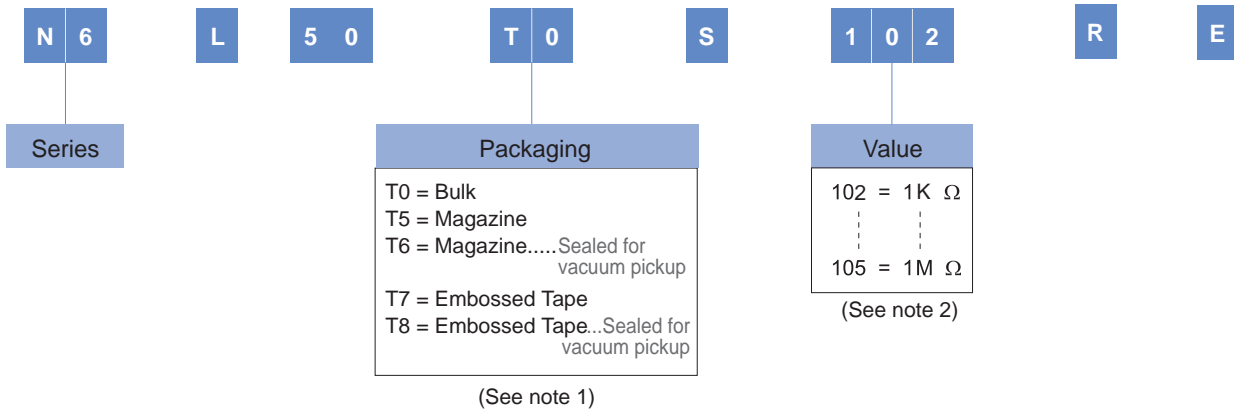
- Range of values \*  
1KΩ ≤ Rn ≤ 500K Ω (1.0 - 2.0 - 2.2 - 2.5 - 4.7 - 5.0)
- Tolerance: 1KΩ ≤ Rn ≤ 1MΩ..... ± 30%
- Max. Voltage: 100 VDC
- Nominal Power 50°C (122°F) (see power rating curve): 0.1W
- Taper: linear
- Linearity\*: 6.5%
- End resistance: ≤ 2% Rn (10Ω min.)
- Equivalent noise resistance: ≤ 5%
- Operating temperature\*\*: -25°C to +70°C

\* depending on application

\* Others upon request

\*\* Up to 85°C depending on application

## HOW TO ORDER



### NOTES:

(1) "T7", "T8" Embossed Tape 750 Units per Reel. Diameter: 330 mm, approx. thickness: 30 mm.

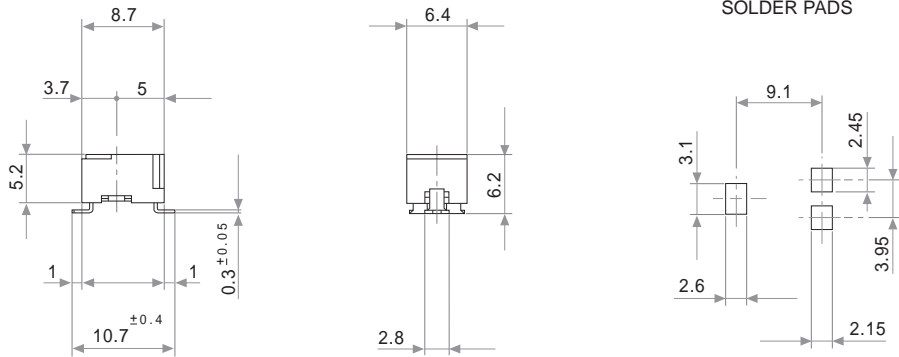
(2) Value: Example: Code: 10 2 = 1 K  
 ↳ Number of zeros  
 ↳ First two digits of the value.

NOTE: The information contained here should be used for reference purposes only.  
 This project has been financially supported by the Spanish Technological Development Institute (CDTI).



## DIMENSIONS

### N-6 L 50 T0 S

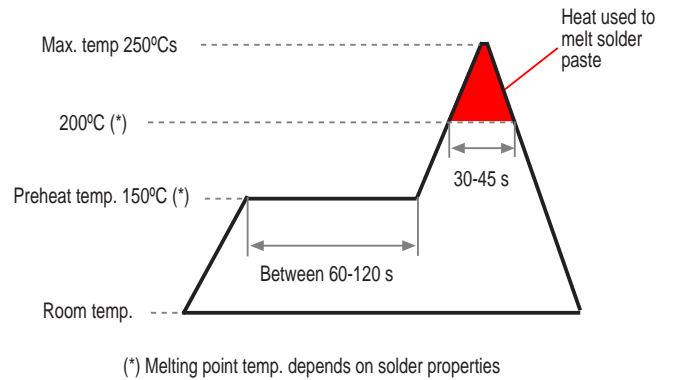
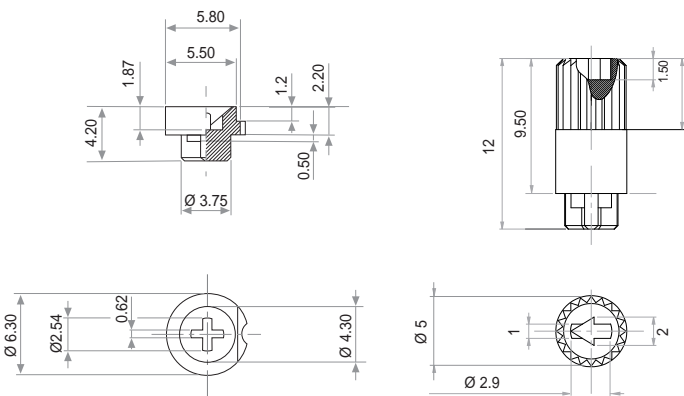


### KNOB Ref.: 5680

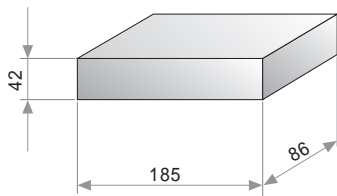
### SHAFT Ref.: 6133

### RoHS RECOMMENDED REFLOW PROFILE

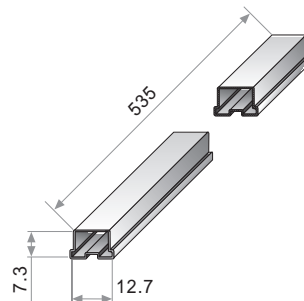
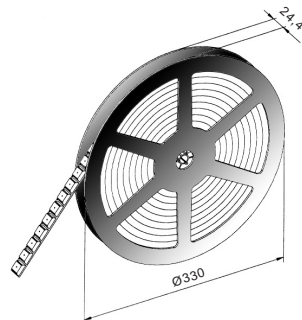
Please order both Knob and Shaft separately. They should be inserted after the reflow process



## PACKAGING



**TO BULK**  
500 Units per box.



**T5 / T6 MAGAZINE**  
Units per magazine: 80

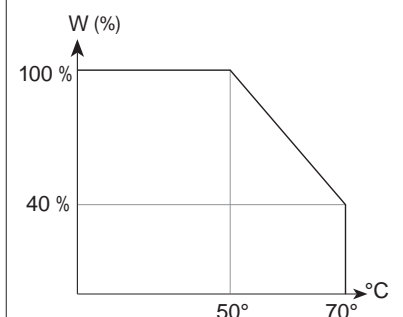
**T7 / T8 EMBOSSED TAPE**  
Units per reel: 750

## TESTS

## TYPICAL VARIATIONS

## POWER RATING CURVE

ELECTRICAL LIFE	1.000 h. @ 50°C: 0.1 W	±10 %
MECHANICAL LIFE (CYCLES)	10K @ 30 CPM	± 4% (Rn < 1 M Ω)
TEMPERATURE COEFFICIENT	-25°C; +70°C	±300 ppm (1K ≤ Rn ≤ 100K)
THERMAL CYCLING	16 h. @ 85°C; 2h. @ -25°C	±5 %
DAMP HEAT	500 h. @ 40°C @ 95% HR	±5 %
VIBRATION (for each plane X,Y,Z)	2 h. @ 10 Hz. ... 55 Hz.	±2 %



NOTE: Out of range values may not comply with these results.