

N-6 RoHS reflowable

N-6 RoHS reflowable

v01

**Navarra de Componentes
Electrónicos, S.A. NACESA**
Factory & Headquarters
Polígono Industrial Municipal
Vial T2, Nº 22
31500 Tudela Spain
Tel: +34-948-820450
Fax: +34-948-824050
Email: sales@piher.net

CATALUNYA BRANCH OFFICE
Salvador Espriu, 63 3. 2.
08005 Barcelona Spain
Tel: +34-93-2257497
Fax: +34-93-2217243
Email: mdrecacha@piher.net

TAIWAN BRANCH OFFICE
11F-1, No.200, Sec.3, Pa Teh Road
105 Taipei, Taiwan
Tel: +886-2-25788182
Fax: +886-2-25788070
Email: pihertwn@ms15.hinet.net

PIHER INTERNATIONAL LTD
Unit 20 Ash
Kembrey Park
Swindon
Wiltshire SN2 8UN UK
Tel: +44-1793-432235
Fax: +44-1793-432274
Email: piher@piher.co.uk

PIHER INTERNATIONAL GMBH
Orchideenstr. 6
90542 Eckental-Brand
Germany
Tel: +49-91268085
Fax: +49-91268089
Email: info@piher-international.de

PIHER BENELUX INTERNATIONAL BV
Ambachtsstraat, 13b
3861 RH Nijkerk Holland
Tel: +31-33-2451476
Fax: +31-33-2459222
Email: benelux@piher.net

PIHER INTERNATIONAL CORPORATION
1640 Northwind Boulevard
Libertyville
Illinois 60048 USA
Tel: +1-847-9189300
Fax: +1-847-9189433
Email: sales@piherusa.com

PIHER INTERNATIONAL, S.A.
10, rue Mercœur
75011 Paris
France
Tel: 33 (0) 1 53 27 61 61
Fax: 33 (0) 1 53 27 61 62
Email: courrier@piher.net

**REGIONAL SALES MANAGER - CHINA &
HK**
Meggitt (Xiamen) Sensors & Controls Co.,
Ltd.
No. 230, South 5 Gaoqi Road,
Xiamen, Fujian Province, 361006, P.R. China
Tel: +86 592 573 3666 ext. 822
Fax: +86 13600922526
Cell: +86 13600922526
Email: charles.qi@piher.net

Exclusive Representative:
**PIHER INTERNATIONAL
ITALIANA SRL**
Via Alzaia Trieste, Nº 3
20090 Cesano Boscone
Milan Italy
Tel: +39-024404779
Fax: +39-024405531
Email: piher@piher-italy.com

N-6 SMD 6 mm Carbon Potentiometer

FEATURES

- RoHS compliant materials ready
- Carbon resistive element
- Plastic substrate
- Over-moulding manufacturing technique
- SMD mounting
- RoHS reflow soldering capable (see how to order)
- Wiper positioned at 50%
- Both sides cross slot easy adjustment
- Accidental rotor movement protected
- Traceability insured through date code marking



RoHS compliant materials



RoHS reflow soldering capable



MECHANICAL SPECIFICATIONS

- Mechanical rotation angle: $280^\circ \pm 10^\circ$
- Electrical rotation angle: $245^\circ \pm 25^\circ$
- Torque: 0.2 to 3 Ncm. (0.28 to 4.2 in-oz)
- Stop torque: > 7.5 Ncm. (10.5 in-oz)

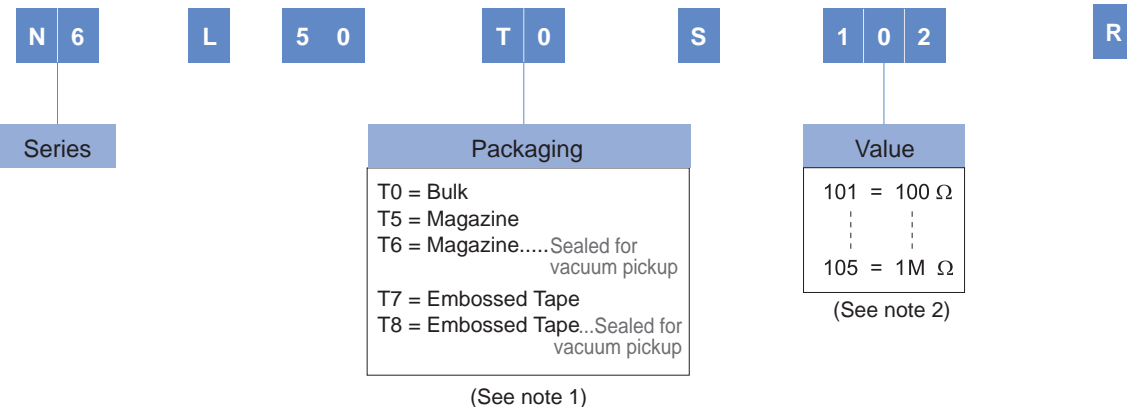
ELECTRICAL SPECIFICATIONS

- Range of values *
 $250 \Omega \leq R_n \leq 500K \Omega$ (1.0 - 2.0 - 2.2 - 2.5 - 4.7 - 5.0)
- Tolerance: $100 \Omega \leq R_n \leq 1M \Omega$ $\pm 30\%$
- Max. Voltage: 100 VDC
- Nominal Power $50^\circ C$ ($122^\circ F$) (see power rating curve): 0.1W
- Taper: linear
- End resistance: $\leq 2\% R_n$ (10 Ω min.)
- Equivalent noise resistance: $\leq 5\%$
- Operating temperature** :
 $-25^\circ C + 70^\circ C$ ($-13^\circ F + 158^\circ F$)

* Others upon request

** Up to $85^\circ C$ depending on application

HOW TO ORDER



NOTES:

(1) "T7", "T8" Embossed Tape 750 Units per Reel. Diameter: 330 mm, aprox. thickness: 30 mm.

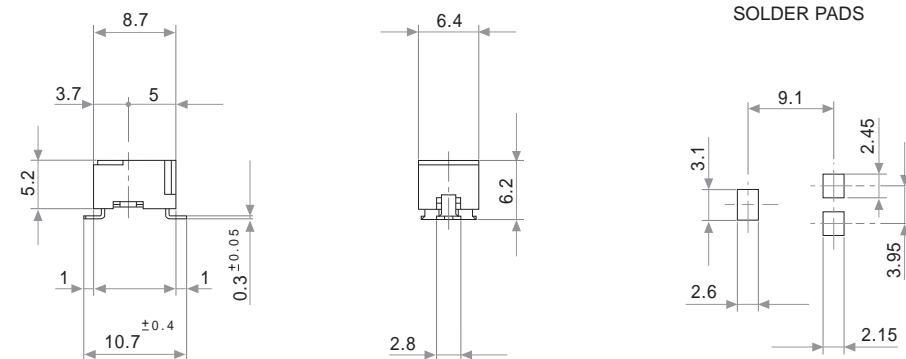
(2) Value: Example: Code: 10 2 = 1 K
 Number of zeros
 First two digits of the value.

NOTE: The information contained here should be used for reference purposes only. This project has been financially supported by the Spanish Technological Development Institute (CDTI).



DIMENSIONS

N-6 L 50 T0 S

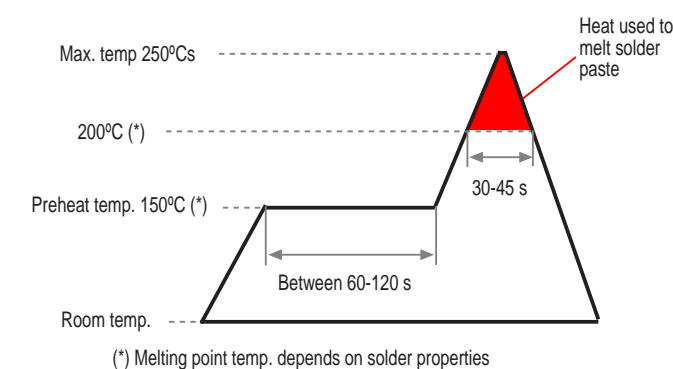
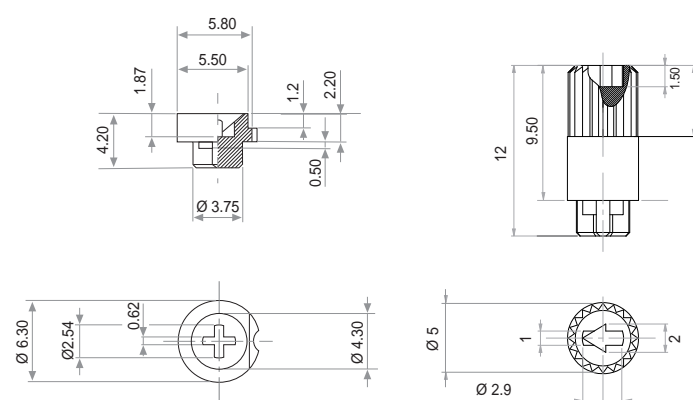


KNOB Ref.: 5680

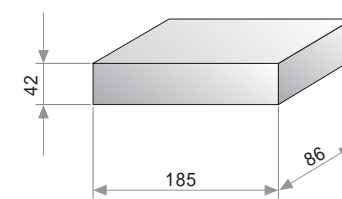
SHAFT Ref.: 6133

RoHS RECOMMENDED REFLOW PROFILE

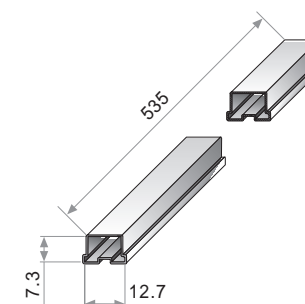
Please order both Knob and Shaft separately. They should be inserted after the reflow process



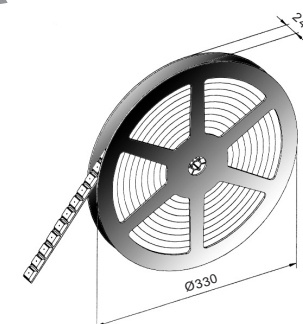
PACKAGING



T0 BULK
500 Units per box.



T5 / T6 MAGAZINE
Units per magazine: 80



T7 / T8 EMBOSSED TAPE
Units per reel: 750

TESTS

TESTS	TYPICAL VARIATIONS	POWER RATING CURVE
ELECTRICAL LIFE	1.000 h. @ $50^\circ C$: 0.1 W	$\pm 10\%$
MECHANICAL LIFE (CYCLES)	100 @ 10 CPM ...15 CPM	$\pm 3\%$ ($R_n < 1 M \Omega$)
TEMPERATURE COEFFICIENT	$-25^\circ C$; $+70^\circ C$	± 300 ppm ($1K \leq R_n \leq 100K$)
THERMAL CYCLING	16 h. @ $85^\circ C$; 2h. @ $-25^\circ C$	$\pm 5\%$
DAMP HEAT	500 h. @ $40^\circ C$ @ 95% HR	$\pm 5\%$
VIBRATION (for each plane X,Y,Z)	2 h. @ 10 Hz. ... 55 Hz.	$\pm 2\%$

NOTE: Out of range values may not comply with these results.

