

SHAFTS

* Not available in self extinguishable plastic

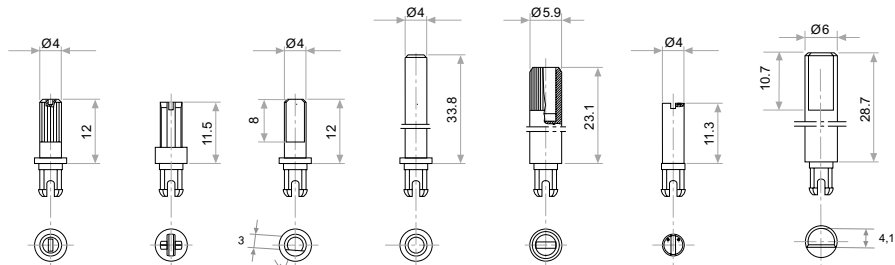


Fig. 3 / Ref. 5372 Fig. 14 / Ref. 5248 Fig. 15 / Ref. 5217 Fig. 16 / Ref. 5262* Fig. 17 / Ref. 5210 Fig. 18 / Ref. 5271 Fig. 19 / Ref. 6032*

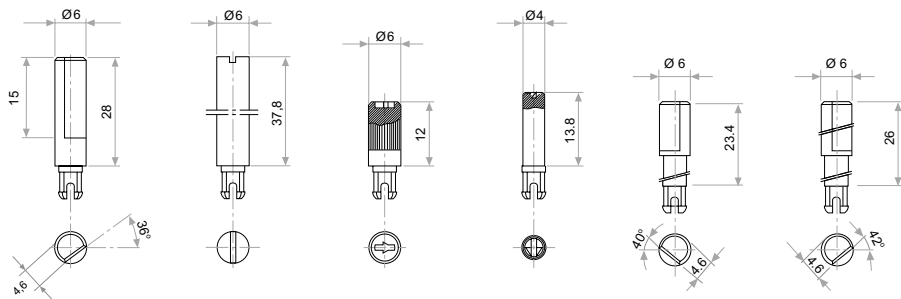


Fig. 20 / Ref. 5369* Fig. 21 / Ref. 6031* Fig. 22 / Ref. 6029 Fig. 23 / Ref. 6022 Fig. 24 / Ref. 6058 Fig. 25 / Ref. 6059

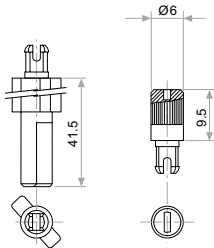


Fig. 27 / Ref. 5268* Fig. 28 / Ref. 6055

THUMBWHEEL

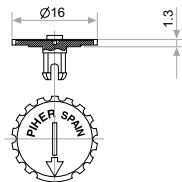


Fig. 4 / Ref. 5371

SALES NETWORK

Navarra de Componentes Electrónicos, S.A. NACESA
Factory & Headquarters
Poligono Industrial Municipal
Vial T2, Nº 22
31500 Tudela Spain
Tel: +34-948-820450
Fax: +34-948-824050
Email: sales@piher.net

CATALUNYA BRANCH OFFICE
Salvador Espriu, 63 3. 2.
08005 Barcelona Spain
Tel: +34-93-2257497
Fax: +34-93-2217243
Email: mdrecacha@piher.net

TAIWAN BRANCH OFFICE
11F-1, No.200, Sec.3, Pa Teh Road
105 Taipei, Taiwan
Tel: +886-2-25788182
Fax: +886-2-25788070
Email: piherwn@ms15.hinet.net

PIHER INTERNATIONAL LTD
Unit 20 Ash
Kembrey Park
Swindon
Wiltshire SN2 8UN UK
Tel: +44-1793-432235
Fax: +44-1793-432274
Email: uk@piher.net

PIHER INTERNATIONAL GMBH
Orchideenstr. 6
90542 Eckental-Brand
Germany
Tel: +49-91268085
Fax: +49-91268089
Email: info@piher-international.de

PIHER BENELUX INTERNATIONAL BV
Ambachtsstraat, 13b
3861 RH Nijkerk Holland
Tel: +31-33-2451476
Fax: +31-33-2459222
Email: benelux@piher.net

PIHER INTERNATIONAL CORPORATION
1640 Northwind Boulevard
Libertyville
Illinois 60048 USA
Tel: +1-847-9189300
Fax: +1-847-9189433
Email: sales@piherusa.com

PIHER INTERNATIONAL, S.A.
10, rue Mercoeur
75011 Paris
France
Tel: 33 (0) 1 53 27 61 61
Fax: 33 (0) 1 53 27 61 62
Email: courrier@piher.net

REGIONAL SALES MANAGER - CHINA & HK
Meggit (Xiamen) Sensors & Controls Co., Ltd.
No. 230, South 5 Gaoqi Road,
Xiamen, Fujian Province, 361006, P.R. China
Tel: +86 592 573 3666 ext. 822
Fax: +86 13600922526
Cell: +86 13600922526
Email: charles.qi@piher.net

Exclusive Representative:
PIHER INTERNATIONAL ITALIANA SRL
Via Alzaia Trieste, Nº 3
20090 Cesano Boscone
Milan Italy
Tel: +39-024404779
Fax: +39-024405531
Email: piher@piher-italy.com

PIHER



PS-15 15 mm SMD Potentiometer

FEATURES

- Specifically designed for leadfree reflow soldering processes.
- 10k cycles mechanical life.
- Dust proof enclosure.
- Carbon resistive element.
- Self extinguishable plastic UL 94V-0.
- Also upon request:
 - Wiper positioned at 50% or fully clockwise.
 - Mechanical detents

MECHANICAL SPECIFICATIONS

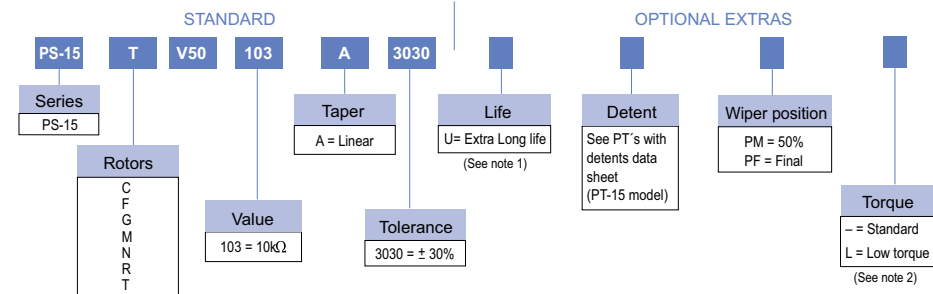
- Mechanical life: 10k cycles
- Mechanical rotation angle: 265° ± 5°
- Electrical rotation angle: 250° ± 20°
- Torque: 0.5 to 2.5 Ncm. (0.7 to 3.4 in-oz)
- Stop torque: > 10 Ncm. (>14 in-oz)

ELECTRICAL SPECIFICATIONS

- Value (*): 10kΩ
- Tolerance (*): ± 30%
- Taper (*): Linear
- Nominal Power: 0.15W @ 50°C (122°F)
- Operating temperature: -40°C + 85°C
- Residual resistance: ≤ 5.10⁻³ Rn
- Equivalent Noise Resistance: ≤ 3% Rn

* Others upon request

HOW TO ORDER



NOTES:

- (1) Extra long life: 100k cycles (to be studied case by case)
- (2) Low Torque: ≤1.5Ncm. *No detent option available for low torque models*

Shafts are not available mounted to the potentiometer and should be ordered separately



NOTE: The information contained here should be used for reference purposes only.

HOW TO ORDER CUSTOM DRAWING

PS-15 TV50 + DRAWING NUMBER (Max. 16 digits)

This way of ordering should be used for options which are not included in the "How to order" standard and optional extras.

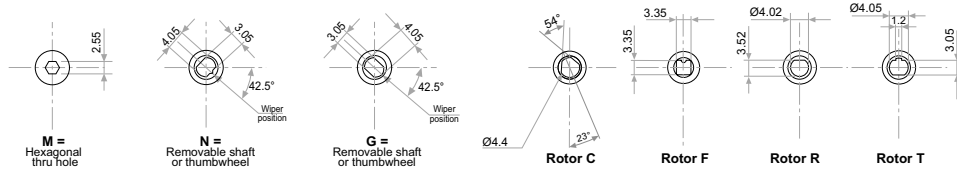
STANDARD OPTIONS

Mechanical Life..... 10k
 Detents None
 Rotor colour Dark grey
 Housing colour Dark grey
 Wiper position Initial
 Torque Standard

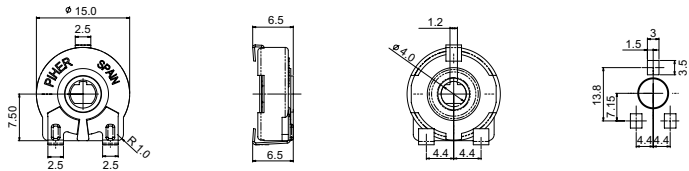
ROTORS (collector side view)

Wipers positioned at initial

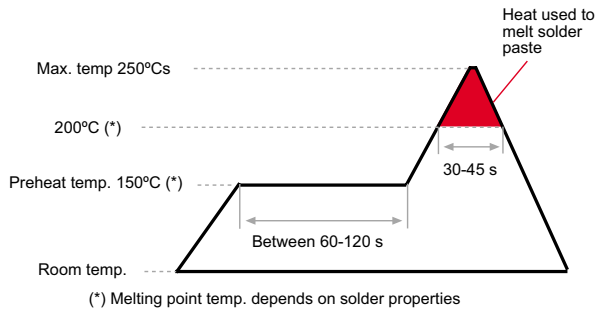
Wipers positioned at 50%



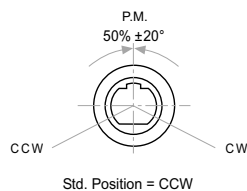
DIMENSIONS



RECOMMENDED REFLOW PROFILE



POSITIONING



TESTS

TYPICAL VARIATIONS

ELECTRICAL LIFE	1k h. @ 50°C; 0.15 W	±10 %
MECHANICAL LIFE	10k @ 10 CPM ...15 CPM	±10 %
TEMPERATURE COEFFICIENT	-40°C; +85°C	±1000 ppm
THERMAL CYCLING	16 h. @ 90°C; 2h. @ -40°C	±5 %
DAMP HEAT	500 h. @ 40°C @ 95% HR	±10 %
VIBRATION (for each plane X,Y,Z)	2 h. @ 10 Hz. ... 55 Hz.	±2 %

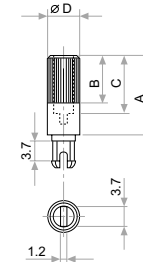
PACKAGING

	PIECES / BOX
Bulk	200 (40 x 85 x 185 mm.)

NOTE : Other packaging methods such as embossed tape: under request

SHAFTS

Hollow model shafts



A = Length (FRS)
 B = Knurling length
 C = Hollow depth
 D = Shaft diameter
 FRS = From rotor surface

FIG.	A	B	C	D	Ref.
1	12	9	8	6	5272
2	19	9	15	6	5214
5	9.5	6.5	5.5	6	5208
9	35	9	15	6	5216
10	37.8	9	33.8	6	5218
11	35	25	15	6	5209
13	7.8	4.8	3.8	6	5265

Solid model shafts

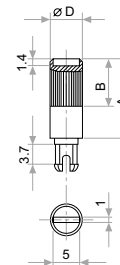


FIG.	A	B	D	Ref.
6	15	9	6	5219
7	16.8	9	6	5220
8	25.3	9	6	5207
12	46	5	6	5227

Slot (1 x 1.4) perpendicular to wiper position. Fig. 12 slot is in line with wiper position.