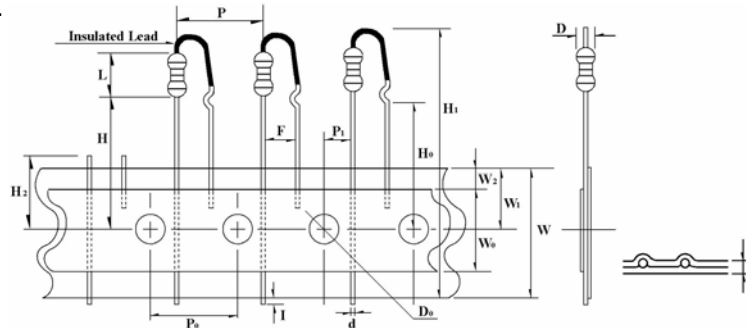


AVISERT TYPE

Avisert type (1)

- This specification is applicable to 1/4W (0.25W) of Carbon Film Fixed Resistors and Metal Film Fixed Resistors.



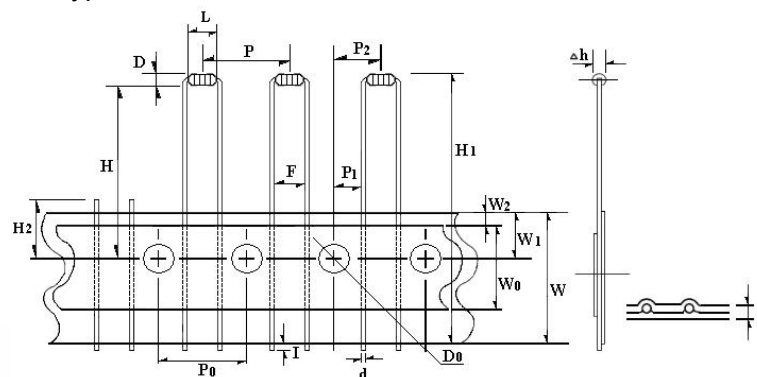
Dimension (mm)

Items	Symbol	Dimension	Items	Symbol	Dimension
Body diameter	D	2.5 Max.	Hole position	W ₁	9.5 ± 0.5
Body length	L	6.8 Max.	Hold down tape position	W ₂	3.0 Max.
Lead wire diameter	d	0.54 ± 0.05	Height of Component from tape center	H	17 ± 0.5
Pitch of component	P	12.7 ± 1	Lead wire clinch height	H ₀	16 ± 0.5
Feed hole pitch	P ₀	12.7 ± 0.3	Component height	H ₁	34.50 Max.
Feed hole center to lead	P ₁	3.85 ± 0.7	Length of snapped lead	H ₂	11.0 Max.
Lead to lead distance	F	5 ± 1	Lead wire protrusion	l	1.0 Max.
Tape width	W	18 ± 1	Feed hole diameter	D ₀	4.0 ± 0.3
Hold down tape width	W ₀	12.5 Min.	Total tape thickness	t	0.5 ± 0.2

Remark: P₀ cumulative pitch error 1 mm / 20 pitch.
Packing in this type is the same with CR 1/4W & MF 1/4W PANASERT Type.

Avisert type (2)

- This specification is applicable to 1/8W (0.125W) of Carbon Film Fixed Resistors and Metal Film Fixed Resistors. This type is ideal for automatic insertion.



Dimension (mm)

Items	Symbol	Dimension	Items	Symbol	Dimension
Body diameter	D	1.85 Max.	Hold down tape width	W ₀	12.5 Min.
Body length	L	3.5 Max.	Hole position	W ₁	9 ± 0.5
Lead wire diameter	d	0.45 ± 0.05	Hold down tape position	W ₂	3.0 Max.

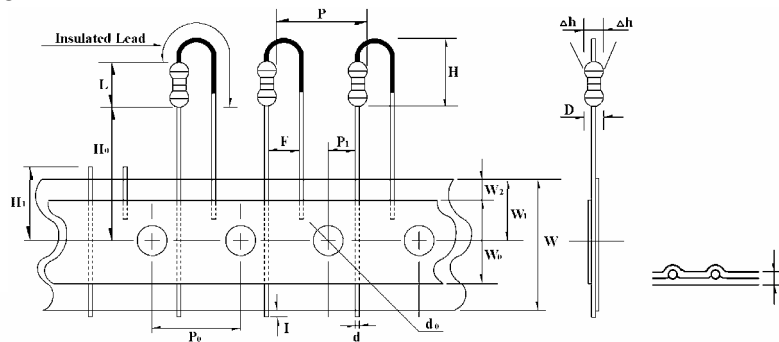
AVISERT TYPE

Items	Symbol	Dimension	Items	Symbol	Dimension
Pitch of component	P	12.7 ± 1	Component height	H ₁	32.25 Max.
Feed hole pitch	P ₀	12.7 ± 0.3	Lead wire clinch height	H	21.25 Max.
Hole center to lead	P ₁	3.84 ± 0.7	Lead wire protrusion	l	1.0 Max.
Hole center to component Center	P ₂	6.35 ± 1.3	Feed hole diameter	D ₀	4 ± 0.2
Lead to lead distance	F	5 ± 1	Total tape thickness	t	0.5 ± 0.2
Component alignment	Δh	0 ± 1	Length of snapped lead	H ₂	11.0 Max.
Tape width	W	18 ± 1			

Remark: P₀ cumulative pitch error 1 mm / 20 pitch.
Packing in this type is the same with CR 1/4W & MF 1/4W PANASERT Type.

Avisert type (3)

- This specification is applicable to 1/8W (0.125W) & 1/4W (0.25W) of Carbon Film Fixed Resistors and Metal Film Fixed Resistors.



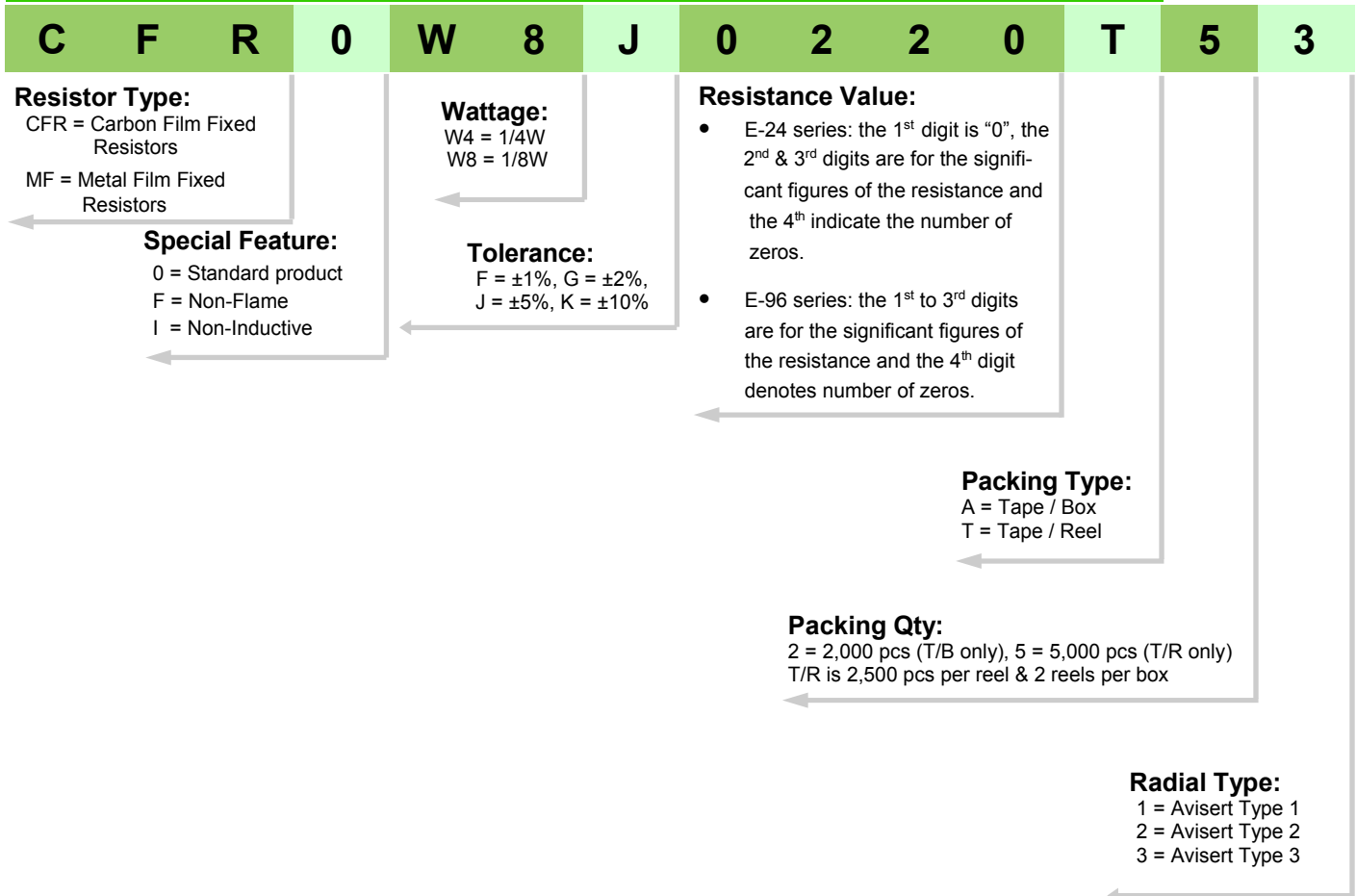
Dimension (mm)

Items	Symbol	Dimension	Items	Symbol	Dimension		
Body diameter	D	1/8W	2.0 Max	Hole center to lead	P ₁	3.85 ± 0.7	
		1/4W	2.5 Max				
Body length	L	1/8W	4.2 Max	Component alignment	Δh	0 ± 1	
		1/4W	6.8 Max				
Body height	H	1/8W	7.0 Max	Tape width	W	18 ± 1	
		1/4W	10.0 Max				
Lead wire diameter	d	1/8W	0.45 ± 0.05	Lead wire clinch height	H ₀	1/8W	20.0 Max.
		1/4W	0.54 ± 0.05			1/4W	16.5 Max.
Pitch of component	P	12.7 ± 1	Length of snapped lead	H ₁	11.0 Max		
Lead to lead spacing	F	1/8W	2.5 ± 1	Lead wire protrusion	l	1.0 Max.	
		1/4W	5 ± 1				
Feed hole pitch	P ₀	12.7 ± 0.3	Feed hole diameter	d ₀	4 ± 0.3		
			Total tape thickness	t	0.5 ± 0.2		

Remark: P₀ cumulative pitch error 1 mm / 20 pitch.
Packing in this type is the same with CR 1/4W & MF 1/4W PANASERT Type.

AVISERT TYPE

Ordering Procedure: (Ex.: CFR 1/8W, +/-5%, 22Ω, T/R-5000 AVISERT (3) Type)



* More explanation of part no, please see details on pages 79-80.

NOTE:
For Metal Film Fixed Resistors, please follow Part No. system on page 18.